

Sending Files with DDX in DWOS 2.5.3

1. After completing the CAD design, route the case forward to production.

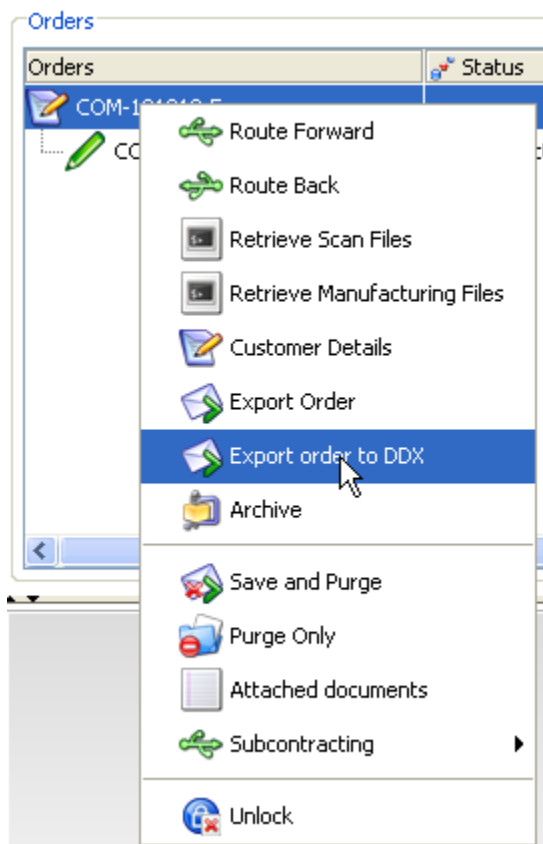
2. Open the Administrative Application located under the gears icon 

3. Click on the “Production” button

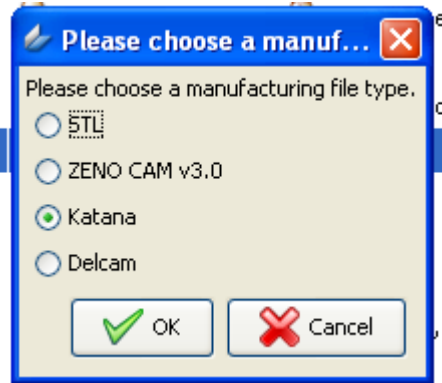


4. Find the case you want to send.

5. Right click on the Yellow Pencil and select Export order to DDX.



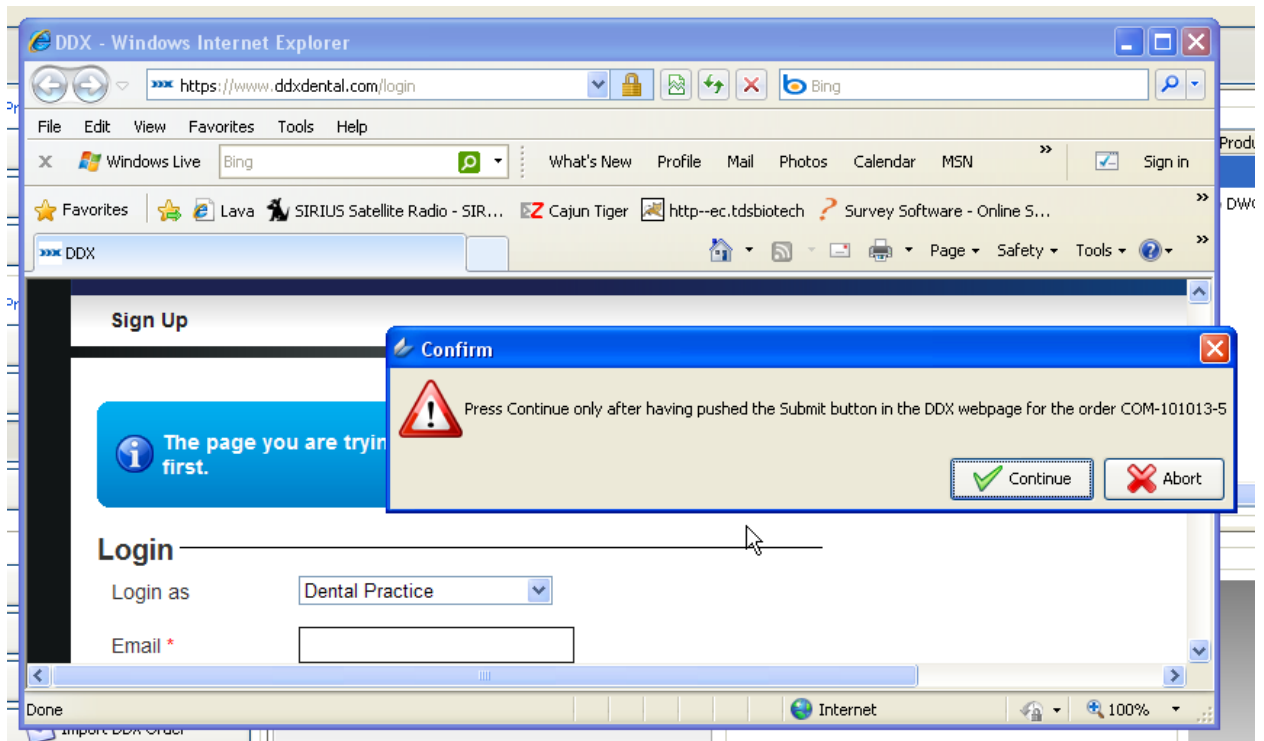
6. Chose the type of file you want to save: STL = Wax; Zeno = Pearl; Delcam =



Pearl; Katana = Katana.

7. Then click OK.

8. You will see a Confirmation window popup. Ignore this window for now and go to the DDX page that also popped up.



9. Log in to DDX with your email and password.

The page you are trying to access requires that you login first.

Login

Login as: Dental Practice

Email *: training@custom-milling.com

Password *: [masked]

Login

[Lost your password?](#) Login to DDX

Don't have a DDX account? [Sign Up](#)

10. The Case will be automatically filled in from the information which was entered into Dental Wings.

11. Please verify the information Under Work Requested:

Select Procedure

- Select Procedure
- Custom Abutments Titanium Scan
- Custom Abutments Zirconia Scan
- Custom Abutments Titanium
- Custom Abutments Zirconia
- E-Max
- Katana Bridge
- Katana Bridge Scan
- Katana Coping
- Katana Coping Scan
- Katana Copings 6 units or more
- Katana Implant
- Lava
- NP/Chromium Cobalt Coping
- NP/Chromium Cobalt Coping Scan
- Pearl Bridge
- Pearl Bridge Scan
- Pearl Coping
- Pearl Coping 6 units or more
- Pearl Coping Scan
- Pearl Implant
- Pearl Maryland/Inlay Bridge
- Titanium Coping
- Wax Full Contour
- Wax Full Contour Scan
- Wax Print 1 to 9
- Wax Print 1 To 9 Scan
- Wax Print 10 to 19
- Wax Print 10 to 19 Scan
- Wax Print 20+

a. Select the Procedure: You always want to choose the procedure with the "Scan" in its name.

b. Verify the tooth number(s)

12. Case Design and Enclosures are not used.

13. Under the Shades and Notes sections:

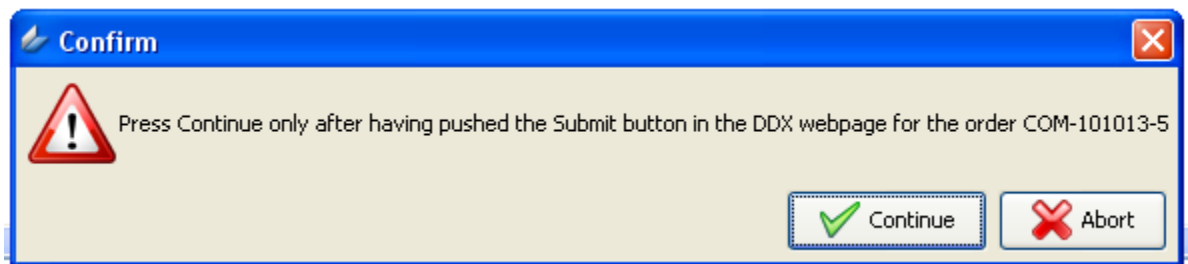
Shades & Notes	File Attachments
Shades <input type="text"/>	Attach files <input type="checkbox"/>
Notes <input type="text"/>	

- Verify the shade: (e.g. A1, 2M1, KT12, P1).
- In the Notes field you can enter any notes reference to this case.

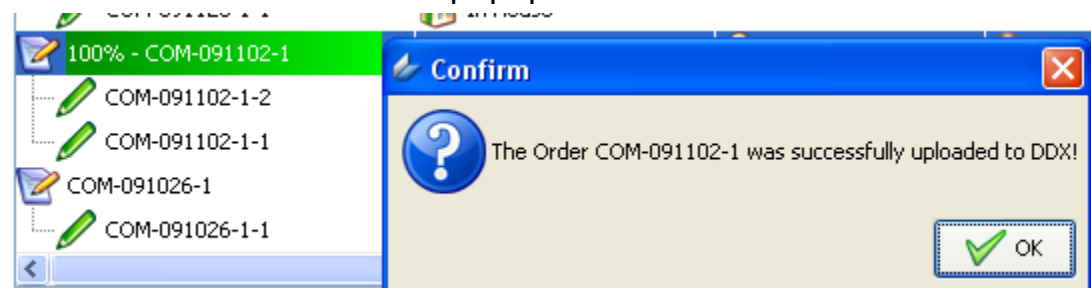
14. Then click the button.

15. Now you can go to the Confirmation window and click Continue.

16.



17. You will see the progression bar start to move. Once it is at 100% you will see another Confirm window popup.



18. Click OK, and then go back to the DDX webpage. If you refresh your screen you will see your DW Case at the bottom of the window.

Shade

11 : A2, 17 : A2

Attached Files



19. You have now successfully submitted your case to Custom Milling Center.